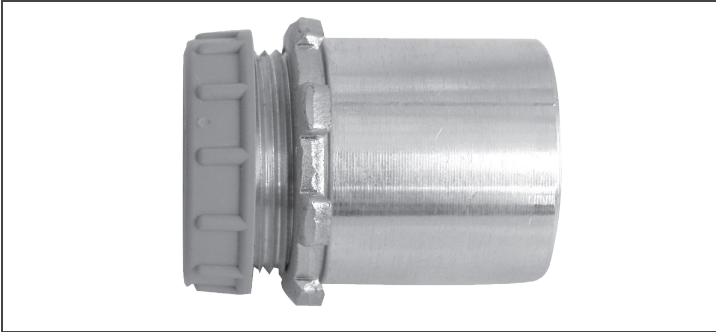


ARMORED CABLE



FEEDER MC CONNECTOR



Description:

Connectors are a one-piece body construction with a unique scroll design that can provide a 360° ground to armor. Provides fast and easy installation, eliminates internal components, prevents cable pullout and saves time and labor.

Application:

Suitable for industrial and commercial use. Manufactured from 6061 copper-free aluminum. A complete range of NPT (*National Pipe Thread*) sizes are available from 1/2" through 4".

Standards:

UL: Class II and III — All Divisions

| Copper MC | Part Number | O.D. Range | Copper MC | Part Number | O.D. Range | Copper MC | Part Number | O.D. Range |
|-----------|-------------|---------------|-----------|-------------|---------------|-----------|-------------|---------------|
| MC 8/3 | CON83 | 0.760 - 0.830 | MC 2/4 | CON139 | 1.320 - 1.390 | MC 250/4 | CON202 | 1.930 - 2.020 |
| MC 8/4 | CON90 | 0.830 - 0.900 | MC 1/3 | CON132 | 1.250 - 1.320 | MC 350/3 | CON202 | 1.930 - 2.020 |
| MC 6/2 | CON83 | 0.760 - 0.830 | MC 1/4 | CON148 | 1.390 - 1.480 | MC 350/4 | CON224 | 2.130 - 2.240 |
| MC 6/3 | CON97 | 0.900 - 0.970 | MC 1/03 | CON132 | 1.250 - 1.320 | MC 400/3 | CON213 | 2.020 - 2.130 |
| MC 6/4 | CON104 | 0.970 - 1.040 | MC 1/04 | CON148 | 1.390 - 1.480 | MC 400/4 | CON235 | 2.240 - 2.350 |
| MC 4/2 | CON90 | 0.830 - 0.900 | MC 2/03 | CON148 | 1.390 - 1.480 | MC 500/3 | CON235 | 2.240 - 2.350 |
| MC 4/3 | CON104 | 0.970 - 1.040 | MC 2/04 | CON157 | 1.480 - 1.570 | MC 500/4 | CON257 | 1.480 - 2.570 |
| MC 4/4 | CON118 | 1.110 - 1.180 | MC 3/03 | CON157 | 1.480 - 1.570 | MC 600/3 | CON246 | 2.350 - 2.460 |
| MC 3/3 | CON111 | 1.040 - 1.110 | MC 3/04 | CON175 | 1.660 - 1.750 | MC 600/4 | CON285 | 2.740 - 2.850 |
| MC 3/4 | CON125 | 1.180 - 1.250 | MC 4/03 | CON166 | 1.570 - 1.660 | MC 750/3 | CON271 | 2.570 - 2.710 |
| MC 2/3 | CON118 | 1.110 - 1.180 | MC 4/04 | CON184 | 1.750 - 1.840 | MC 750/4 | CON299 | 2.850 - 2.999 |
| | | | MC 250/3 | CON184 | 1.750 - 1.840 | | | |