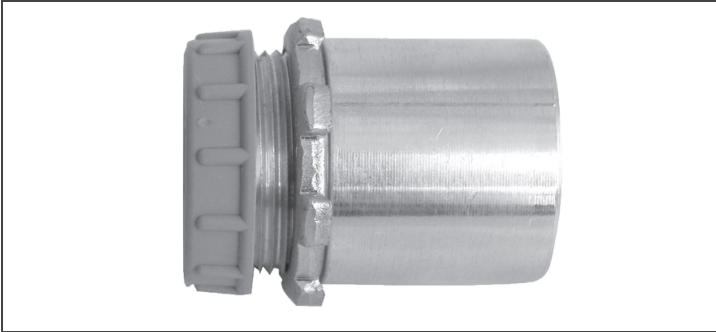


## ARMORED CABLE



## FEEDER MC CONNECTOR



### Description:

Connectors are a one-piece body construction with a unique scroll design that can provide a 360° ground to armor. Provides fast and easy installation, eliminates internal components, prevents cable pullout, and saves time and labor.

### Application:

Suitable for industrial and commercial use. Manufactured from 6061 copper-free aluminum. A complete range of NPT (*National Pipe Thread*) sizes are available from 1/2" through 4".

### Standards:

UL: Class II/III (*all Divisions*)

Copper MC	Part Number	O.D. Range	Copper MC	Part Number	O.D. Range	Copper MC	Part Number	O.D. Range
MC 8/3	CON83	0.760 - 0.830	MC 2/4	CON139	1.320 - 1.390	MC 250/4	CON202	1.930 - 2.020
MC 8/4	CON90	0.830 - 0.900	MC 1/3	CON132	1.250 - 1.320	MC 350/3	CON202	1.930 - 2.020
MC 6/2	CON83	0.760 - 0.830	MC 1/4	CON148	1.390 - 1.480	MC 350/4	CON224	2.130 - 2.240
MC 6/3	CON97	0.900 - 0.970	MC 1/03	CON132	1.250 - 1.320	MC 400/3	CON213	2.020 - 2.130
MC 6/4	CON104	0.970 - 1.040	MC 1/04	CON148	1.390 - 1.480	MC 400/4	CON235	2.240 - 2.350
MC 4/2	CON90	0.830 - 0.900	MC 2/03	CON148	1.390 - 1.480	MC 500/3	CON235	2.240 - 2.350
MC 4/3	CON104	0.970 - 1.040	MC 2/04	CON157	1.480 - 1.570	MC 500/4	CON257	1.480 - 2.570
MC 4/4	CON118	1.110 - 1.180	MC 3/03	CON157	1.480 - 1.570	MC 600/3	CON246	2.350 - 2.460
MC 3/3	CON111	1.040 - 1.110	MC 3/04	CON175	1.660 - 1.750	MC 600/4	CON285	2.740 - 2.850
MC 3/4	CON125	1.180 - 1.250	MC 4/03	CON166	1.570 - 1.660	MC 750/3	CON271	2.570 - 2.710
MC 2/3	CON118	1.110 - 1.180	MC 4/04	CON184	1.750 - 1.840	MC 750/4	CON299	2.850 - 2.999
			MC 250/3	CON184	1.750 - 1.840			